

TRACK DISTANCES
 INSIDE CIRCUMFERENCE: 1085.9 FT
 OUTSIDE CIRCUMFERENCE: 1341.8 FT
 OPTIMAL RACING LINE: 1072.8 FT

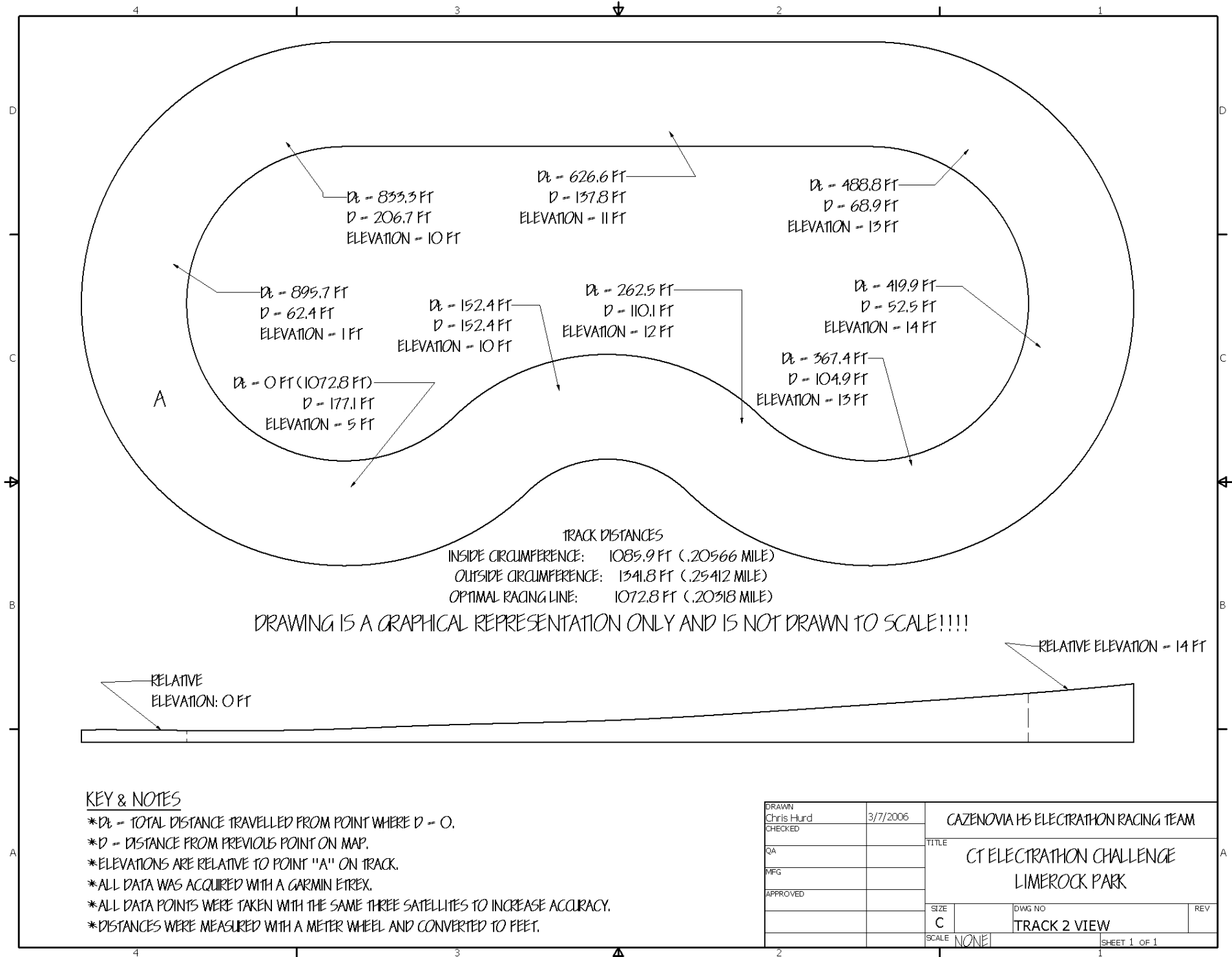
DRAWING IS A GRAPHICAL REPRESENTATION ONLY AND IS NOT DRAWN TO SCALE!!!!



KEY & NOTES

- *D_t = TOTAL DISTANCE TRAVELLED FROM POINT WHERE D = 0.
- *D = DISTANCE FROM PREVIOUS POINT ON MAP.
- *ELEVATIONS ARE RELATIVE TO POINT "A" ON TRACK.
- *ALL DATA WAS ACQUIRED WITH A GARMIN ETREX.
- *ALL DATA POINTS WERE TAKEN WITH THE SAME THREE SATELLITES TO INCREASE ACCURACY.

DRAWN Chris Hurd	3/7/2006	CAZENOVIA HS ELECTATHON RACING TEAM	
CHECKED		TITLE CT ELECTATHON CHALLENGE LIMEROCK PARK	
QA		SIZE C	DWG NO
MFG		SCALE NONE	REV
APPROVED		TRACK 2 VIEW	
		SHEET 1 OF 1	



TRACK DISTANCES
 INSIDE CIRCUMFERENCE: 1085.9 FT (.20566 MILE)
 OUTSIDE CIRCUMFERENCE: 1341.8 FT (.25412 MILE)
 OPTIMAL RACING LINE: 1072.8 FT (.20318 MILE)

DRAWING IS A GRAPHICAL REPRESENTATION ONLY AND IS NOT DRAWN TO SCALE!!!!



KEY & NOTES

- *Dt = TOTAL DISTANCE TRAVELLED FROM POINT WHERE D = 0.
- *D = DISTANCE FROM PREVIOUS POINT ON MAP.
- *ELEVATIONS ARE RELATIVE TO POINT "A" ON TRACK.
- *ALL DATA WAS ACQUIRED WITH A GARMIN ETREX.
- *ALL DATA POINTS WERE TAKEN WITH THE SAME THREE SATELLITES TO INCREASE ACCURACY.
- *DISTANCES WERE MEASURED WITH A METER WHEEL AND CONVERTED TO FEET.

DRAWN Chris Hurd		3/7/2006		CAZENOVIA HS ELECTRATHON RACING TEAM	
CHECKED				TITLE	
QA				CT ELECTRATHON CHALLENGE	
MFG				LIMEROCK PARK	
APPROVED				SIZE	DWG NO
				C	TRACK 2 VIEW
				SCALE	REV
				NONE	
				SHEET 1 OF 1	